

DLP - DFP

- Finecorsa per comando luci, ventilatori, condizionatori all'apertura della porta
- 2 soluzioni di fissaggio in acciaio con regolazione sulla battuta della porta
- Cablaggio opzionale a seconda delle esigenze
- Pressacavo M20 incluso
- *Position switches for control of lights, fans or coolers*
- *2 fastening solutions with steel plates, both adjustable on door frame*
- *Optional wiring depending on needs*
- *M20 cable gland included*



DLP-FF6



DFP-F6

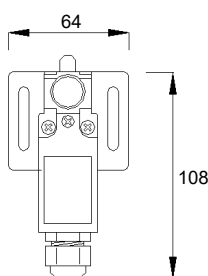
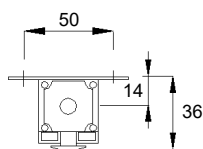


DFP-F

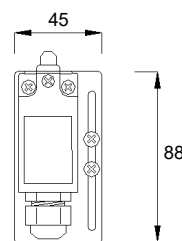
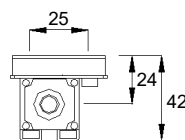
codice code	contatti contacts	azionatore actuator	tipo di fissaggio fastening type
DLP-F	2NC	pistoncino <i>plunger</i>	piastrina regolabile a scorrimento con fori asolati passo 25 mm <i>Adjustable sliding metal plate with loop holes, 25mm pitch</i>
DLP-F1	1NO+1NC		
DLP-F5	2NO	pistoncino + pulsante manuale <i>plunger + manual push button</i>	
DLP-F6	1NO+1NC		
DLP-F7	2NC		
DLP-FF6	2NC (F) 1NO+1NC (F6)	pistoncino (F) / pistoncino + pulsante manuale (F6) <i>plunger (F) / plunger + manual push button (F6)</i>	
DFP-F	1NO+1NC	pistoncino <i>plunger</i>	piastrina metallica singola con fori asolati, passo 50 mm <i>one piece metal plate with loop holes, 50mm pitch</i>
DFP-F-1C*	2NO		
DFP-F-2C**	1NO+1NC		
DFP-F1	2NC		
DFP-F6	1NO+1NC	pistoncino + pulsante manuale <i>plunger + manual push button</i>	

* 1 cavo cablato (50cm) - 1 cable wired (50cm)

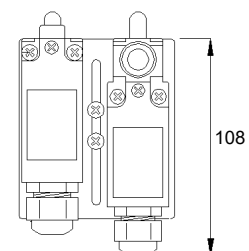
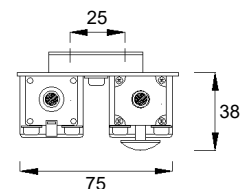
** 2 cavi cablati (50cm+150cm) - 2 cables wired (50cm+150cm)



DFP-F6



DLP-F



DLP-FF6